

neway®

Precision on-camera monitor with ultra high brightness and touch screen, which capable of controlling video camera menu on set.

5.5" 2000 NITS ULTRA-BRIGHT TOUCH CAMERA CONTROL MONITOR



2000 Nits



1920×1080



Touch Screen



Camera Control



3G-SDI / HDMI2.0

T55S





2000 NITS

AUTO DIMMING

5.5" 1920×1080 physical resolution, with 2000 nits ultra high brightness for outdoor sunlight readable.

COLOR CALIBRATION

Color calibration supports the PRO/LTE version of ColourSpace CMS provided by Light Illusion.

*Default color calibration to 100% BT.709

HDR

Making lighter and darker details to be displayed more clearly. Support ST2084 300 / ST2084 1000 / ST2084 10000 / HLG.

3D LUT

Built-in 3D-LUT, featuring 17 default logs and 6 user logs.

TOUCH CONTROL

EASY TO USE

Easy and convenient touch commands to quickly wake up the menu on screen, then adjust camera assist functions, display and settings.



FUNCTIONS



VOLUME



BACK LIGHT



DISPLAY



ZOOM IN



ZOOM POSITION

*Note: Touch function can be switched off by POWER button.

CONTROL CAMERA

BY LANC CABLE

The LANC cable enables the monitor to be interfaced with the Sony video camera for the purpose of controlling some camera's functions.

HOW TO CONTROL?



ACTIONS FEEDBACK

Users can control camera's functions and menus directly on the monitor.

UI FOR CAMERA CONTROL

Tap the "camera" icon on the right of menu to access the UI of camera control.

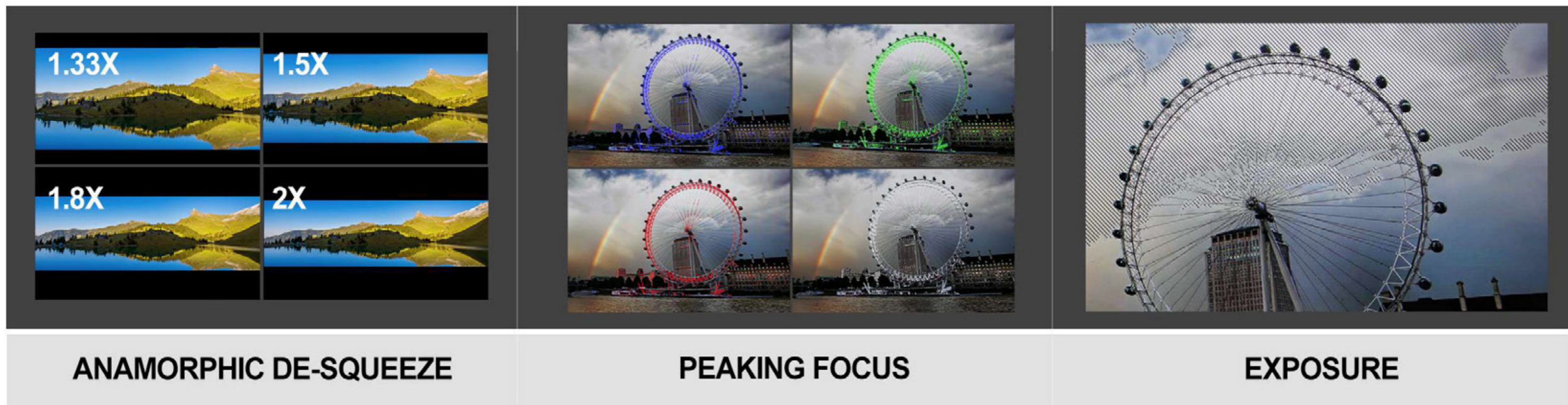
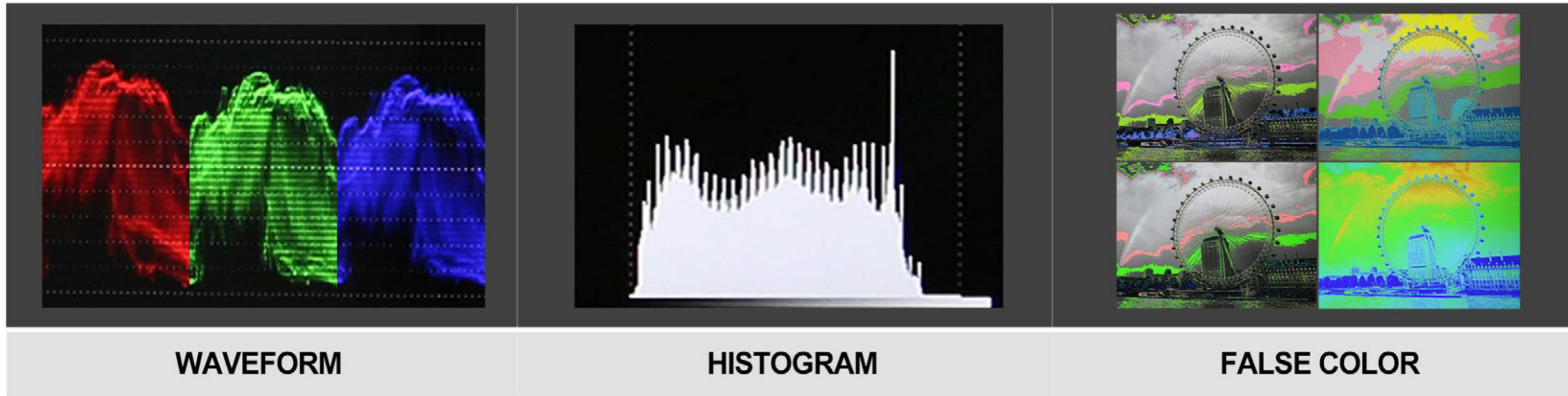


HOW TO CONTROL?

FOCUS	ZOOM	IRIS	
Controlling the focus of video camera.	Controlling the zoom in and out of video camera lens.	Controlling the aperture size of video camera.	Controlling the menu of video camera.

*Note: Some cameras do not support all control functions.





CAMERA ASSIST FUNCTIONS





HDMI 2.0

UP TO 2160P 60HZ

Equipped with HDMI 2.0 input and loop output interfaces, which support up to 2160p 60Hz video signal.

3G-SDI

UP TO 1080P 60HZ

Equipped with 3G-SDI input and loop output interfaces, which support up to 1080p 60Hz video signal.

SPECIFICATIONS

DISPLAY	Touch Screen	Capacitive touch
	Panel	5.5" LCD
	Physical Resolution	1920×1080
	Aspect Ratio	16:9
	Brightness	2000 nits
	Contrast	1000:1
	Viewing Angle	160°/ 160°(H/V)
	Color Space	100% BT.709
	HDR Supported	HLG; ST2084 300/1000/10000
INPUT	HDMI	1 (HDMI 2.0)
	3G-SDI	1
OUTPUT	HDMI	1 (HDMI 2.0)
	3G-SDI	1
SUPPORTED FORMATS	HDMI	2160p 24/25/30/50/60, 1080p 24/25/30/50/60, 1080i 50/60, 720p 50/60...
	3G-SDI	1080p 24/25/30/50/60, 1080pSF 24/25/30, 1080i 50/60, 720p 50/60...
AUDIO IN/OUT	Speaker	1
	HDMI	8ch 24-bit
	Ear Jack	3.5mm - 2ch 48kHz 24-bit
POWER	Input Voltage	DC 7-24V
	Power Consumption	≤14W (15V)
ENVIRONMENT	Operating Temperature	0°C~50°C
	Storage Temperature	-20°C~60°C
DIMENSION	Dimension(LWD)	154.8mm × 93.8mm × 26.5mm
	Weight	310g



ACCESSORIES

STANDARD



0.8M HDMI A-D Cable



LANC Cable



Hot Shoe Mount



USB Drive Disk

OPTIONAL



12V 2A DC Power Adapter