



RM53S

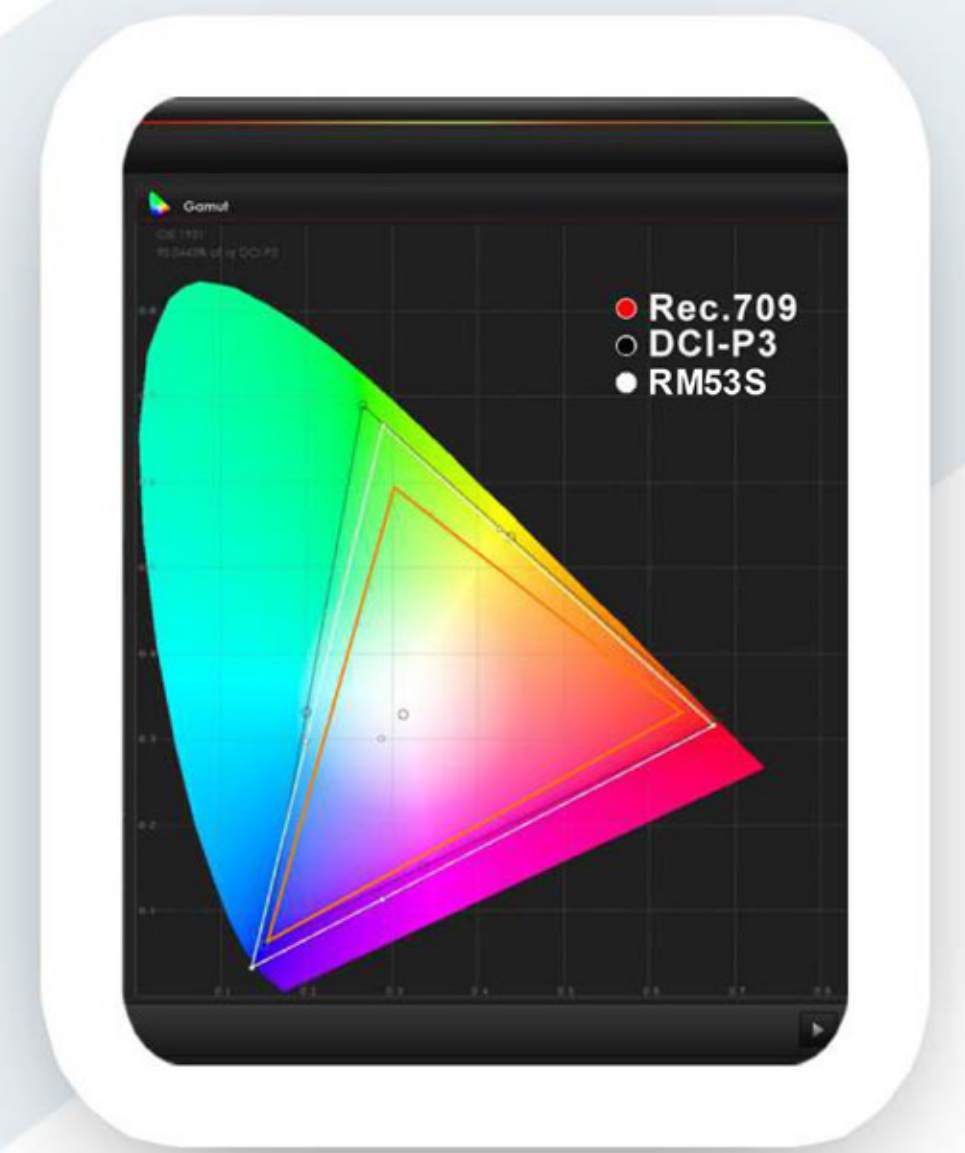
3x5" 1920x1080
2RU Rack Mount Monitor

Rack mount monitor for broadcast & live streaming.
Application for video wall & broadcast trucks.



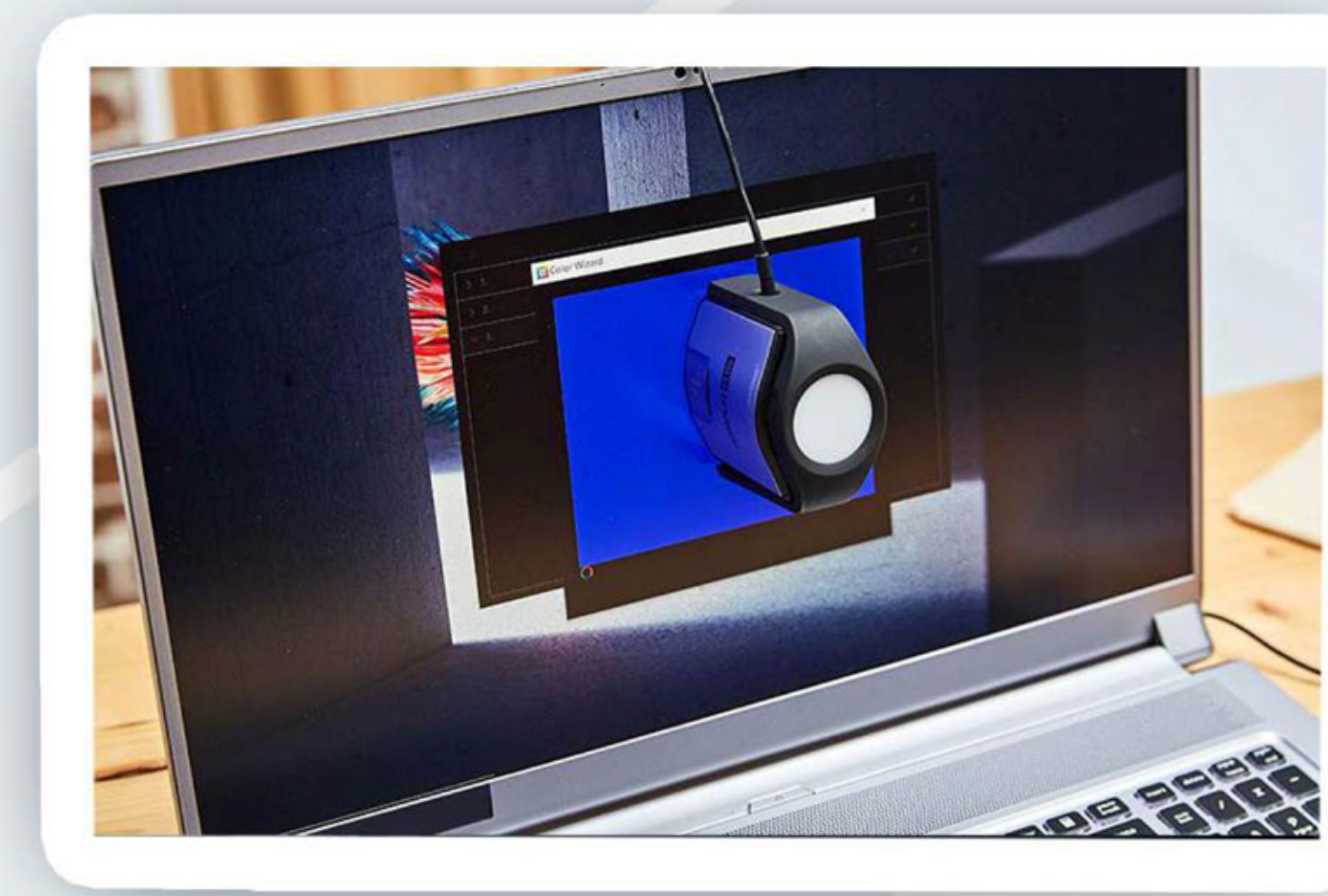
98% DCI-P3 SCREEN

Native, Rec.709 and 3 User Defined are Optional for Color Space



COLOR CALIBRATABLE

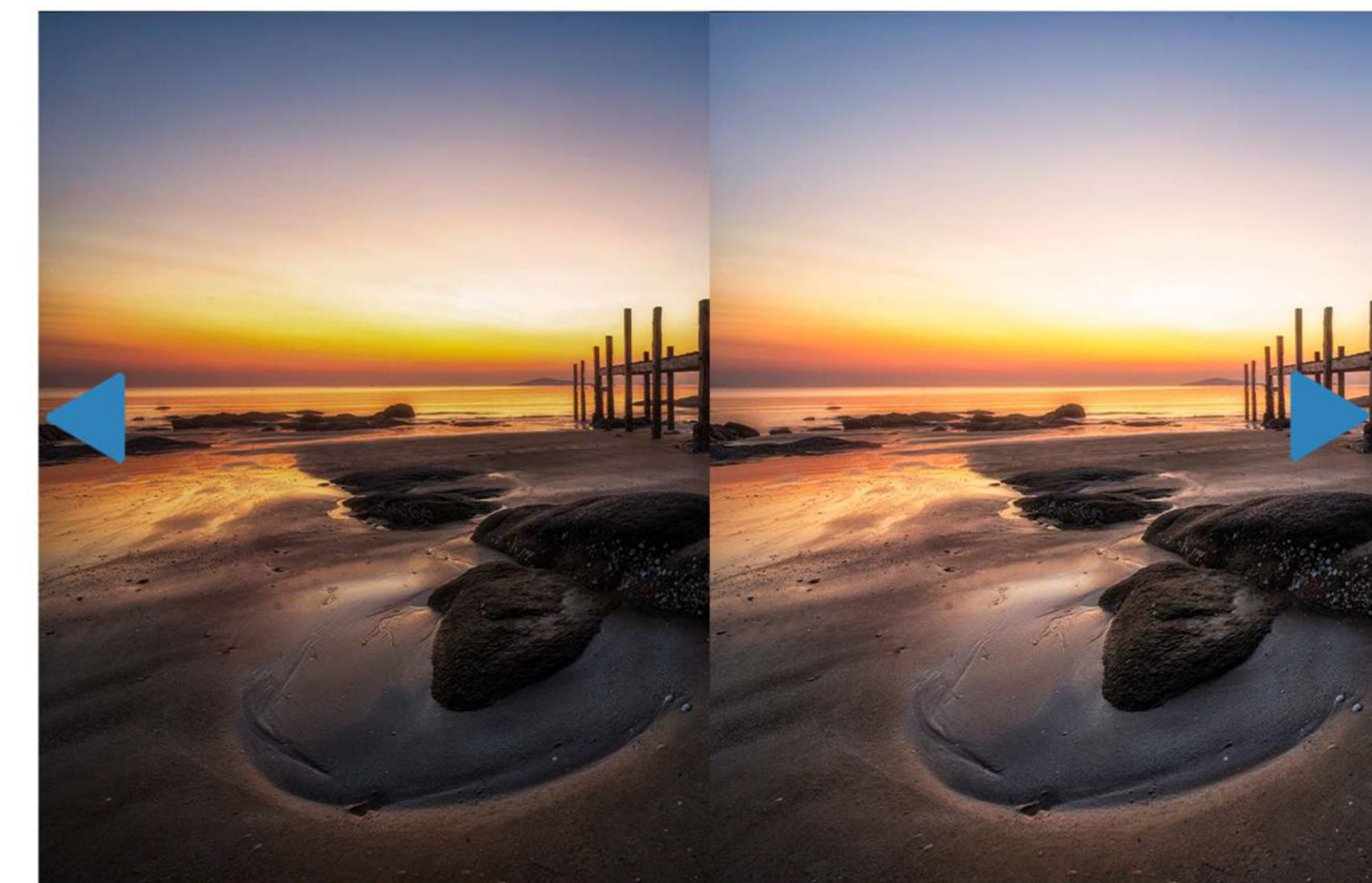
A specific calibration to reproduce colors of the image color space. Color calibration supports the PRO/LTE version of ColourSpace CMS by Light Illusion.



HDR

When **HDR** is activated, the display reproduces a greater dynamic range of luminosity, allowing lighter and darker details to be displayed more clearly. Effectively enhancing the overall picture quality.

Without HDR
Inaccurate exposure,
reduced image detail,
unsatisfactory viewing experience



With HDR
Enjoy sharper images,
greater detail and richer colors.
HLG/ ST 2084 300/1000/10000
are for optional.

3D-LUT

3D-LUT is a table for quickly looking up and output specific color data. By loading different 3D-LUT tables, it can quickly recombine color tone to form different color styles. Built-in 3D-LUT, featuring 17 default logs and 6 user logs.



3D LUT LOAD

Supports loading the .cube file via USB flash disk.

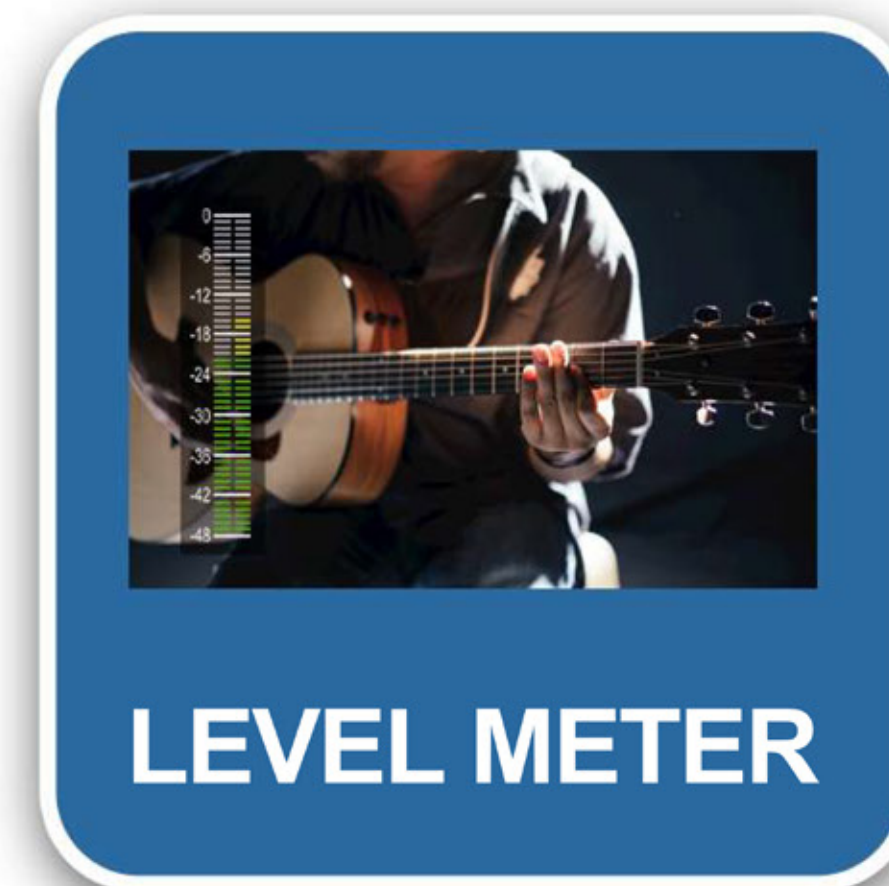
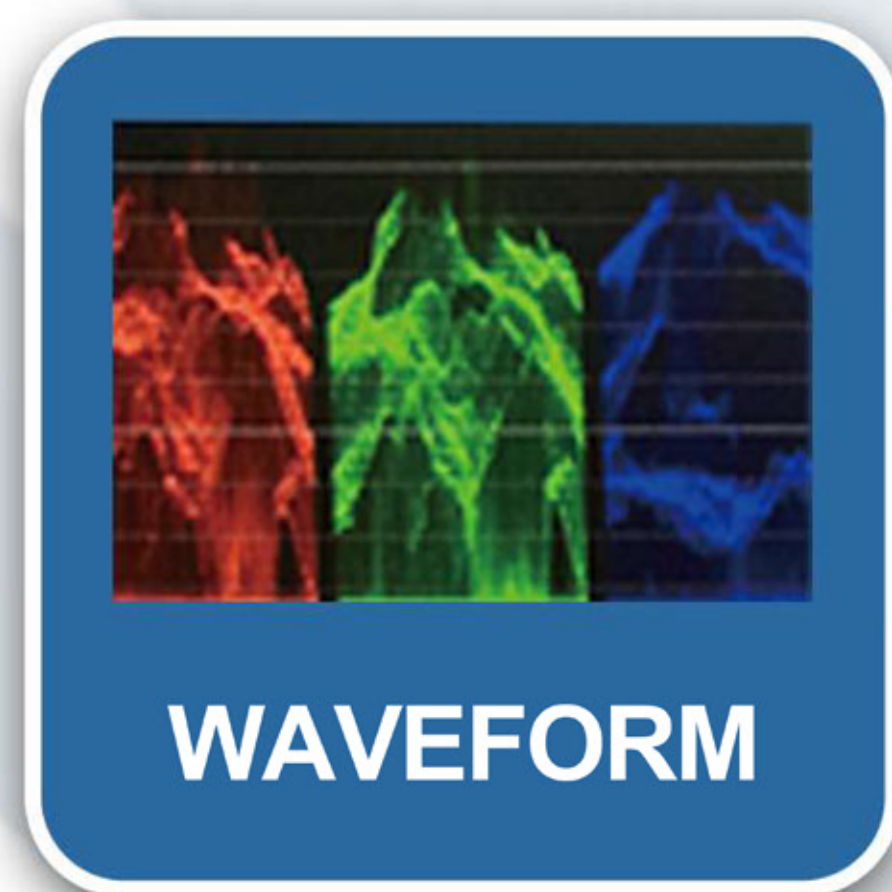
FULL SCREEN FUNCTION

WAVEFORM / VECTOR SCOPE / HISTOGRAM



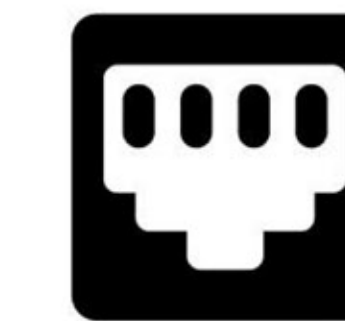
CAMERA AUXILIARY FUNCTIONS

Plenty of auxiliary functions for taking photos and making movies, such as waveform, histogram, peaking, false color and audio level meter...

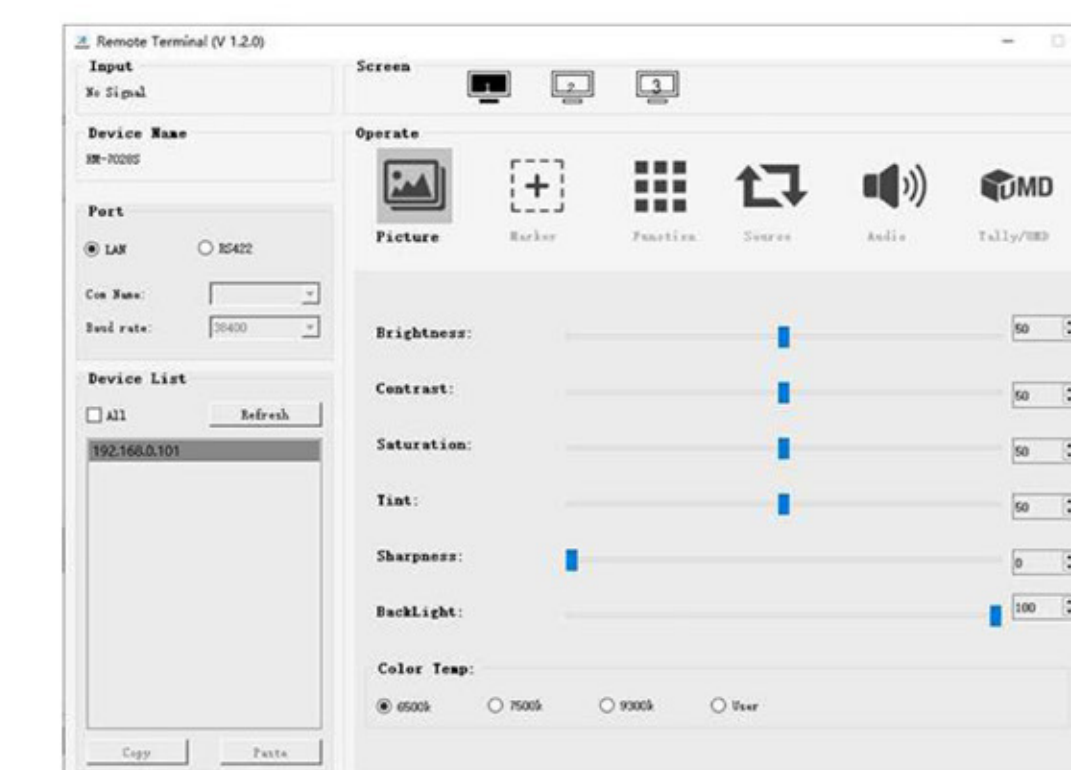


Easy Remote Control

All monitors can be perfectly adjusted by a dedicated computer under the control of software. So you can focus on other operation on the workbench at the same time.

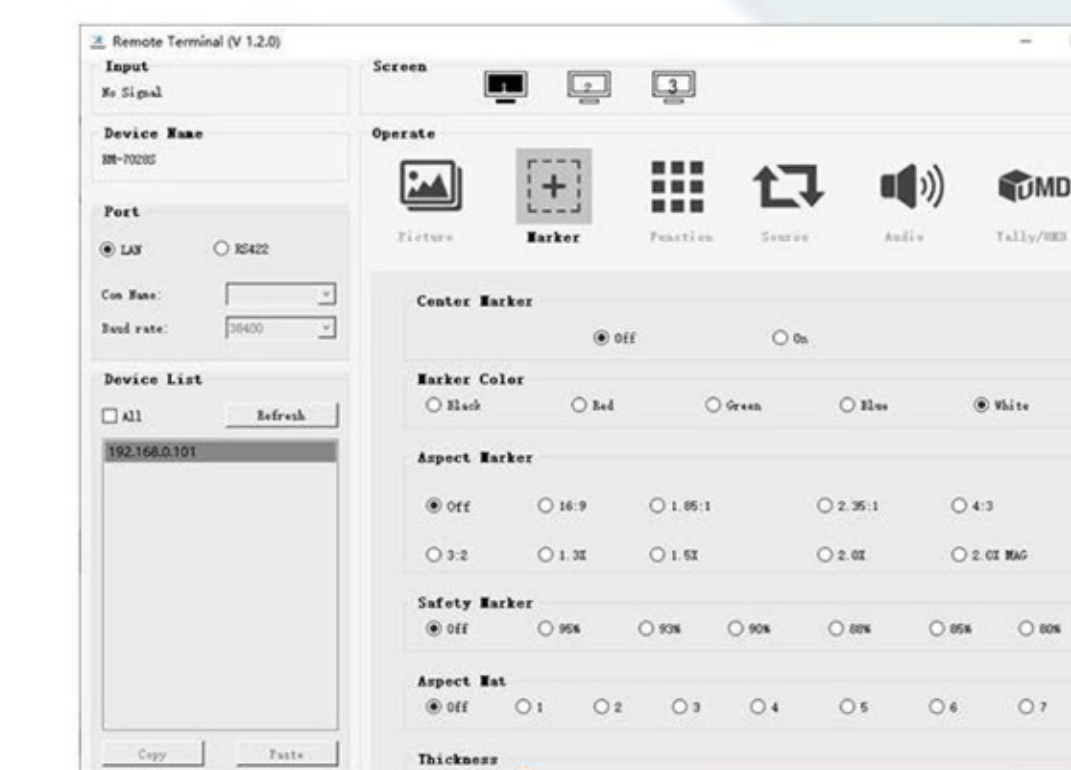


Monitor connects a working computer through LAN and recognize each other after adjusting the IP address. Then link start immediately.



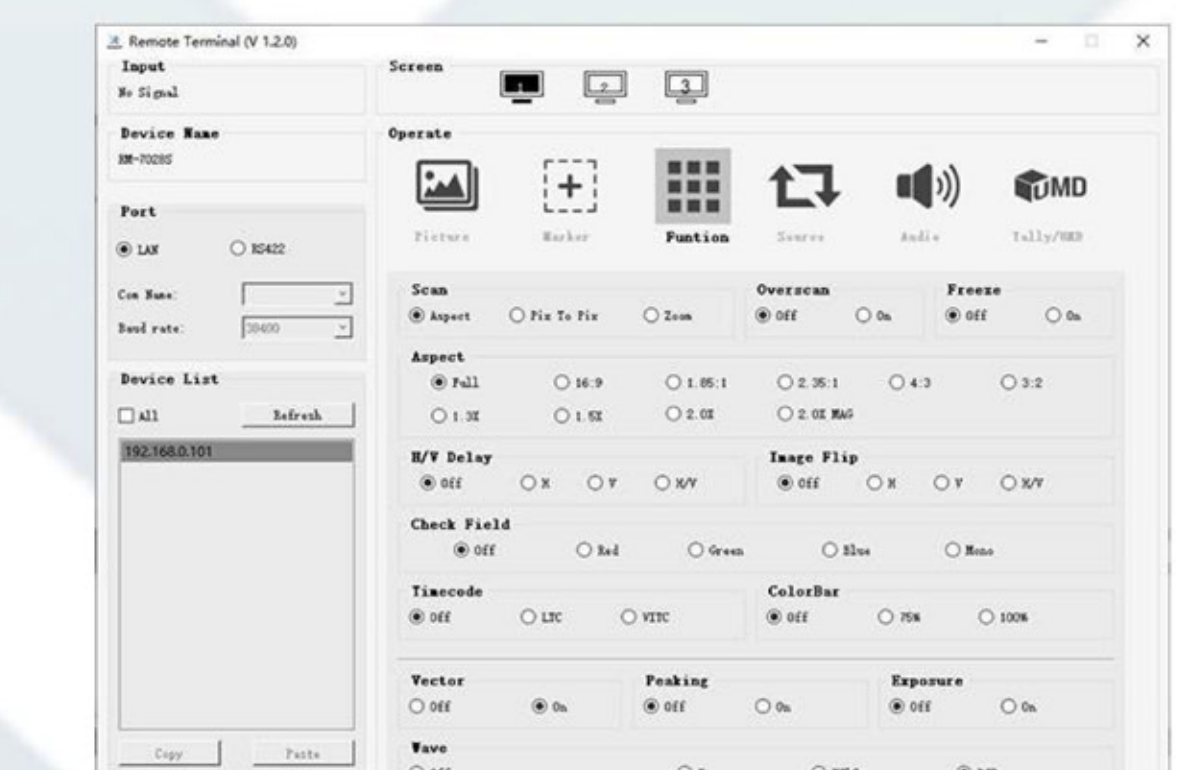
Picture

Display items can be controlled include, Brightness, Contrast, Saturation, Tint, Sharpness, Backlight, Color Temp.



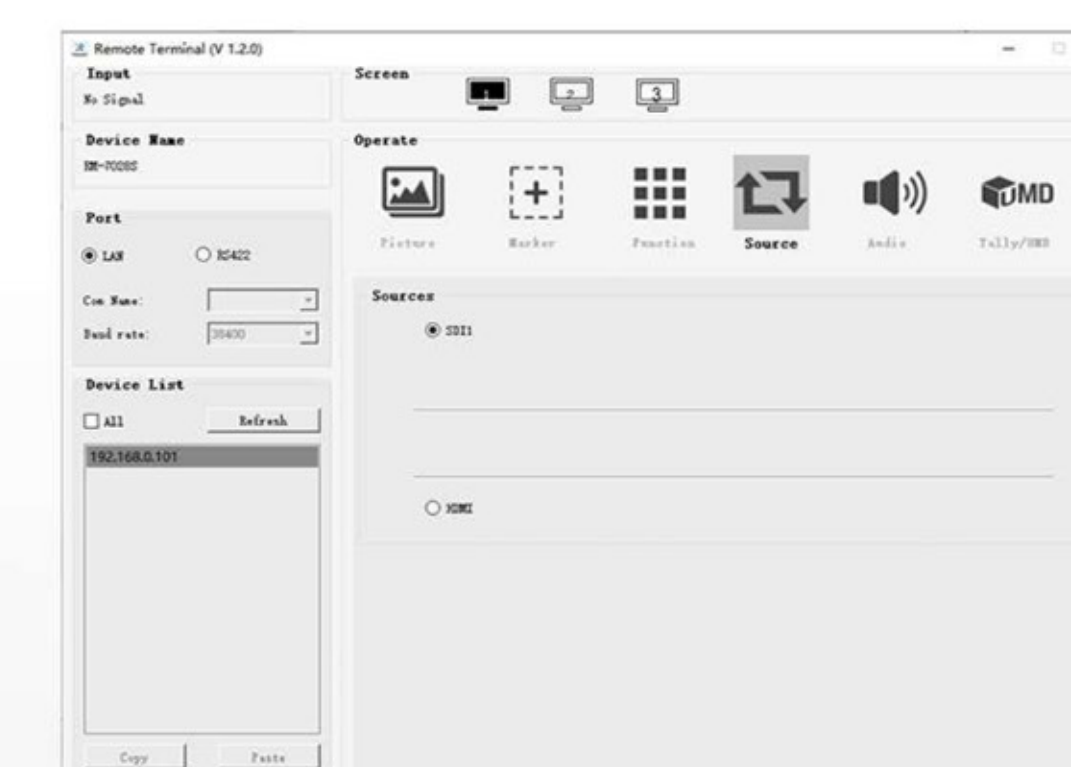
Marker

Image markers can be controlled include, Center Marker, Marker Color, Aspect Marker, Safety Marker, Aspect Mat and Thickness.



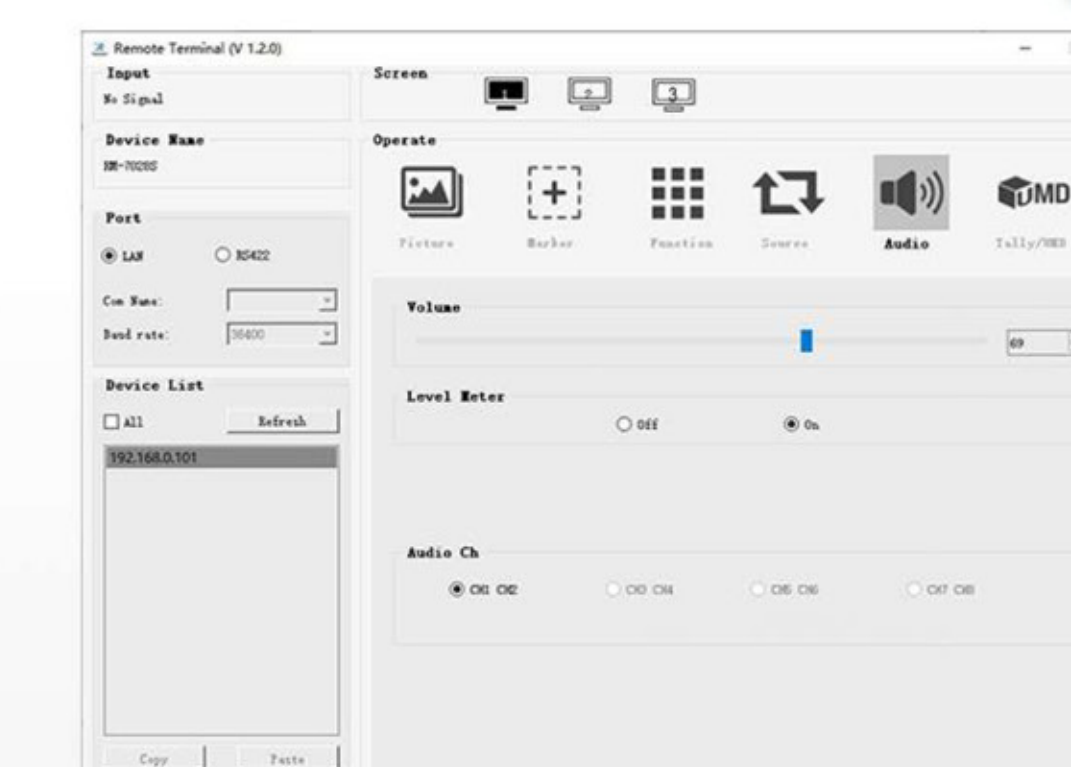
Function

The built-in function can be controlled include, Scan Mode, Overscan, Freeze, Aspect, H/V Delay, Check Field, Timecode, Color Bar, Vector, Peaking, Exposure...



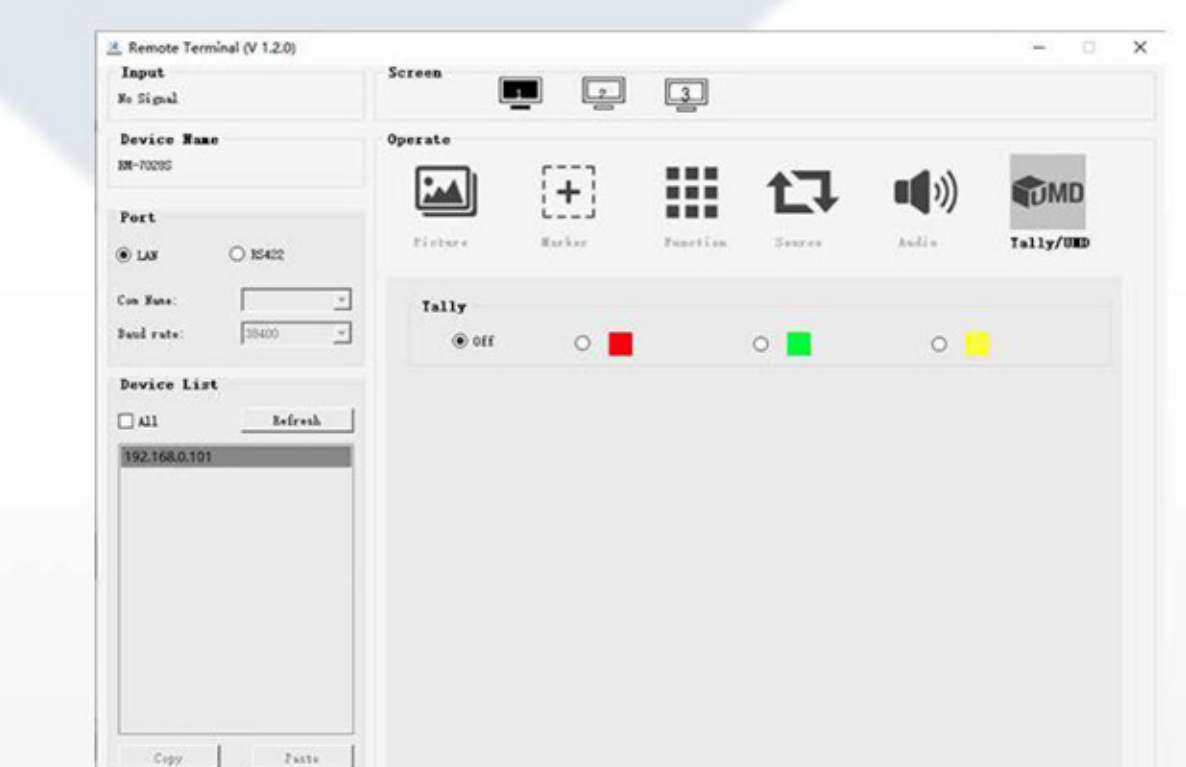
Source

Video sources can be controlled include, HDMI and SDI.



Audio

Audio items can be controlled include, Volume, Level Meter, and Audio Ch.



Tally/UMD

Tally function can be controlled under Tally/UMD mode. The UMD function is not available for this device.



2RU Rack Mount

Suitable for 19 inch width cabinet installation with 2RU mounting height and slim metal design, occupying only a small part of volume. Its flat front panel is designed to bring sufficient viewing angle.

◀ Model NO:RM173S

◀ ModelNO.:CK1560S

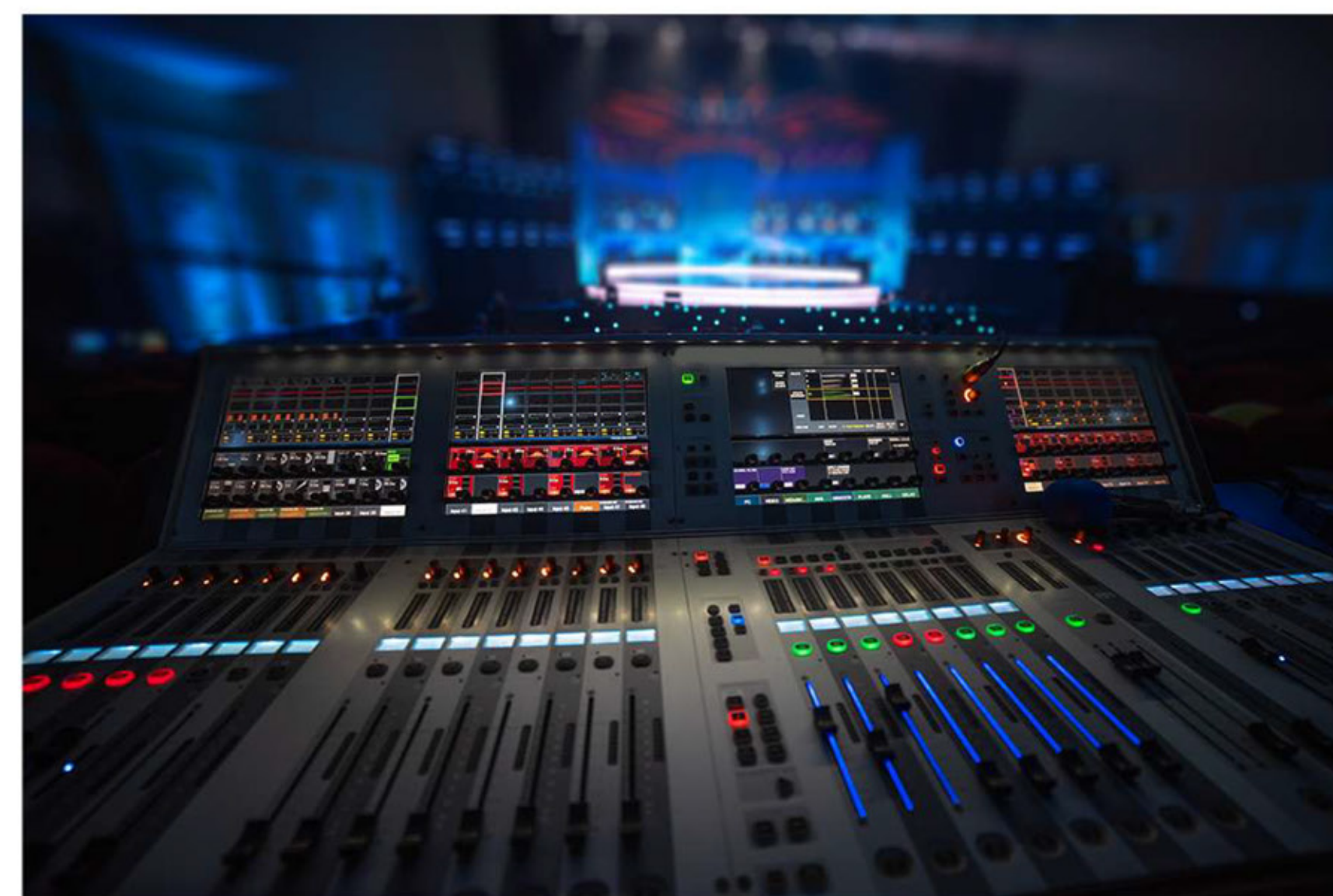
◀ Model NO:RM02S

◀ Model NO:RM70S

◀ Model NO:RM53S



Post Production



Broadcast Studio

CNC Delicate Milled Structure



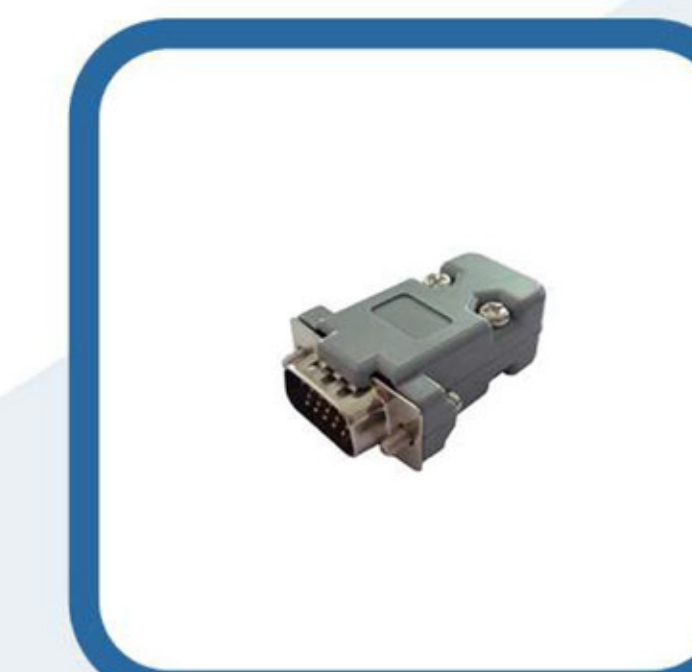
SPECIFICATION

DISPLAY	Panel	3×5"
	Physical Resolution	1920×1080
	Aspect Ratio	16:9
	Brightness	450cd/m ²
	Contrast	1000:1
	Viewing Angle	160°/ 160° (H/V)
	Color Space	98% DCI-P3
	LUT Support	3D-LUT (.cube format)
INPUT	3G-SDI	3
	HDMI	3 (HDMI 2.0, supports up to 4K 60Hz)
	LAN	1
OUTPUT	3G-SDI	3
FORMATS	HDMI	3 (HDMI 2.0, supports up to 4K 60Hz)
	SDI	1080p 60/50/30/25/24, 1080pSF 30/25/24, 1080i 60/50, 720p 60/50...
AUDIO	HDMI	2160p 60/50/30/25/24, 1080p 60/50/30/25/24, 1080i 60/50, 720p 60/50...
	Ear Phone Slot	3
POWER	Current	2.5A(12V)
	Input Voltage	DC 12-24V
	Power Consumption	≤27W
ENVIRONMENT	Operating Temperature	0°C~50°C
	Storage Temperature	-20°C~60°C
OTHER	Dimension (LWD)	480mm×116mm×88mm
	Weight	2.1kg

ACCESSORIES



Power Adapter



Tally Connector



Electronic User Manual